

# USB Memory Phone

## User Manual



Free calls over Internet    Caller ID and auto run function

## **1. Instruction**

### **1.1 Summary**

USB Memory Phone is a USB Memory Phone embedded with 64M memory drive. Once you plug it into your computer's USB port, the softphone stored in memory drive will auto run without any additional installation, login in the account stored automatically, then you can make VoIP calls by phone keypads, easy to make calls just as mobile phone.

### **1.2 Features**

1. Built-in 64M bytes memory drive, memory can be updated to 128M bytes.
2. Auto run function under windows 2000 sp4 and XP.
3. Embedded in Softphone with account information.
4. Softphone and account information can be stored to be readable for end user.
5. Un-plug & close automatically without affecting PC system operation.
6. With LCD, keypad and ringer, easy to use like mobile phone.
7. Phone rings for all incoming calls, ring style and volume selectable.
8. Caller ID, echo cancellation, full duplex communication.

## 1.3 System Requirements

1. Windows 2000 sp4 or XP
2. 400MHz processor and free USB1.1 or USB2.0 port
3. 128MB RAM and 15MB free disk space
4. Any broadband connection or minimum 33.6 Kbps dialup

## 1.4 Package Contents

1. One USB Memory phone
2. One user manual

## 2 Using the USB Memory Phone

### 2.1 Keypad Instruction



#### **IN/OUT:**

Press to scroll the caller or dialed number.

**▲/▼: Up/Down**

Scroll to the contacts.

 **: Dial/Answer**

Dial out number or Answer a call.

 **: Hang up**

End talking or refuse incoming call.

**C: Delete Key**

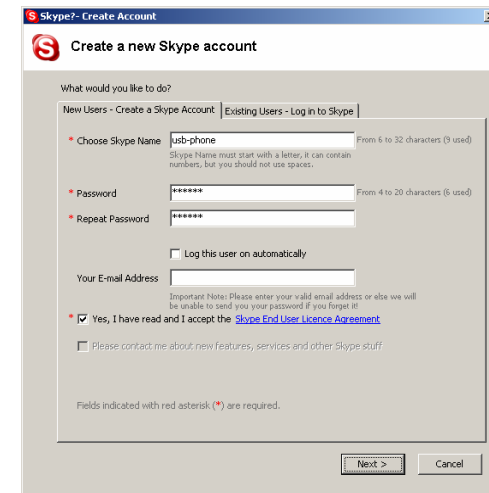
- (1) Press to scroll the skype window at the idle state
- (2) Delete inputted wrong number while dialing.

## Suppose SkypeMate was embedded in the phone:

### 2.2 Run Skype


- Download Skype software and install it (www.skype.com).  
The version must be 1.0.0.106 or higher.
- Run Skype and log in with skype account.

You can create a Skype account as shown below:



After software startup, the icon will appear to the system tray as shown below:

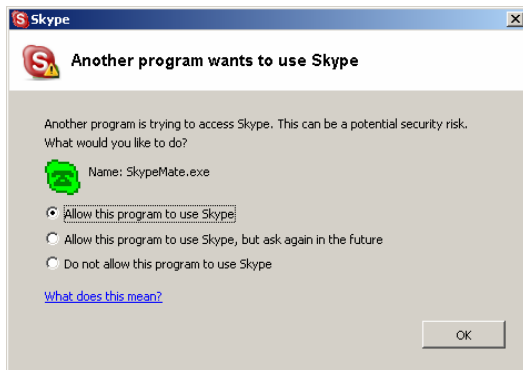


That indicates the Skype are successfully connected to Internet.  
If the icon is shown as , you have to check your Internet connection.

## 2.3 Connect USB Memory Phone to PC and Run

### SkypeMate

- When USB Memory Phone is connected to PC, SkypeMate software which was embedded in the phone will auto-run, then Skype program will pop up the window as shown below:




Select the first option “Allow this program to use Skype”, click “OK” button.


**Note:** If you selected the wrong option, you can make another selection. Please see **2.7. FAQ /problem3** for detail.

After running SkypeMate, the icon will appear to the system tray as shown:



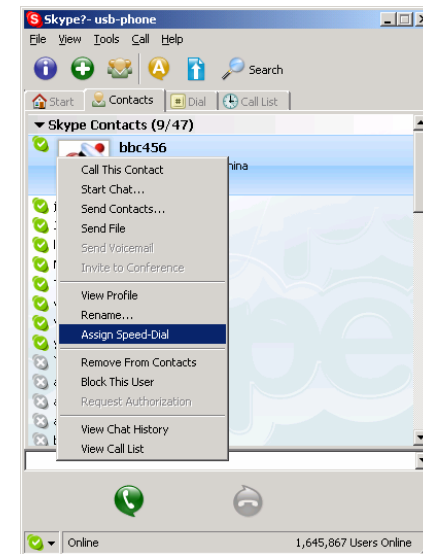
That indicates the device and Skype are connected successfully.


If the icon shown as  (the phone is green and the outside is grey), please run Skype first.

If the icon shown as  (the phone is red and the outside is green), it means USB Memory Phone connected incorrectly. Please reconnect USB Memory Phone to PC.


## 2.4 Call another Skype user

- Add "bbc456" to Contacts
- Assign Speed-Dial for it, example "11"




- Input number and call out:  
Press digital "11" on USB Memory Phone, this number will be shown on Skype window, then press  to call out.

## 2.5 Call to regular phone

- Press "00"+"country number"+"phone number", then press .

Example: call someone in Beijing, China, please press



00861012345678, and then press .

0086	10	12345678
-----	-----	-----
country code	city code	destination number

**Note:** If you want to use this function, you should buy SkypeOut Credit from [www.skype.com](http://www.skype.com) first.

## 2.6 Answer a call

When a call comes in, the USB Memory Phone will ring. Press


 to answer the call, or press  to refuse the call.

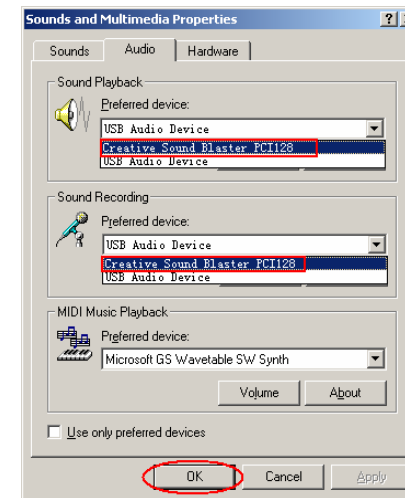
## 2.8 FAQ

### Problem 1

There is no voice comes out when play music?

### **Resolution**

Please execute the “Control Panel->Sound and Video () ->Audio”, set **Sound Playback** and **Sound Recording**'s preference device to your sound card, it shown as below:

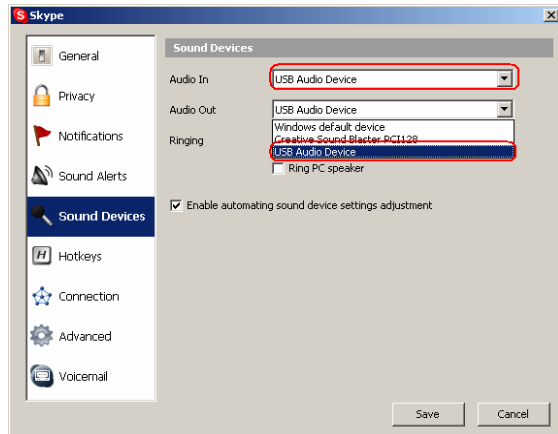


### Problem 2

The voice is played from the PC's sound card instead of the USB Memory Phone when I make/answer a call?


### **Resolution**

Execute “Tools->Options->Sound Devices” to open the window as below:



Set “Audio In” and “Audio Out” to “USB Audio Device”.

### **Problem 3**

Skype has been started, but the icon of SkypeMate still shown as  (the phone is green and the outside is grey)?

### **Resolution**

Maybe you have selected the wrong option, you can execute “Tools-> Options-> Privacy-> Manage other programs’ access to Skype”, and then choose the needed option, click “Change” button to open the “Manage API Access Control” windows, and make another selection.

2005-11-10 Ver.1.1